

# Medical Imaging



FULL BODY  
X-RAY PHANTOM  
with real human bones

UNIQUE IN  
the world 



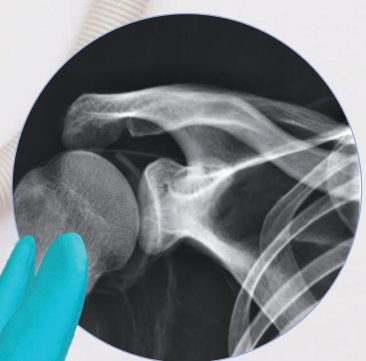
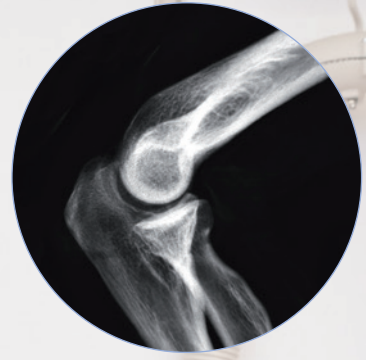
Made in  Germany

View product  
video here:





X-RAY MANIKIN





## Full Body X-Ray Phantom

This model is unique in the world and provides excellent training opportunities for positioning and alignment techniques in projection radiography. It should be part of the basic equipment of any radiographic school. The phantom contains a real human skeleton as well as outlines of larynx, lung, heart and kidneys (organs will create a shadow on the image), which allows taking real X-ray images like in a patient. Using a real skeleton provides even smallest guiding structures which is impossible with a plastic skeleton. During assembly of this phantom we pay special attention to the correct size of joint spaces. All joints are moveably mounted allow positioning in all normal x-ray positions (e.g. frog position, pro- and supination of lower arm). The arms can be moved upwards which makes the phantom suitable for use in all kinds of osseous examinations under CT. Each phantom is hand-made one of a kind; it may differ in size and appearance. Depending on the individual phantom it may have some pathologies, outer shape may differ depending on size of the skeleton. The new version was re-designed in co-operation with a well-known German school for radiographers and fits all needs for education in radiography. This phantom is only sold against proof of medical use. Life size.



Also Partial phantoms available!

Ref.no. 7200

Details:



All Erler-Zimmer phantoms including transport cases



## Radiographic positioning doll, plastic skeleton

This model offers all features of model 7200 but includes a plastic skeleton and is due to this only suitable for positioning training. Including a transport and storage case.

Ref.no. 7201 (ohne Abb.)

Details:



Got a broken phantom? Have it repaired at our premises in 4 easy steps:

### 1. Pick-Up Service

The forwarder comes with an empty transport case and collects your phantom.



### 2. Repair Cost Estimate

We will provide you with a cost estimate. You decide about a repair then.



### 3. Repair

The phantom will be repaired fast and reasonable priced at our factory. Result: as **NEW!**



### 4. Delivery

The "new" phantom will be delivered by the forwarder.



## X-Ray thorax

Thorax X-ray phantom, consisting of spine (C6 to L3), thoracic cage, shoulder blades and collar bones, embedded in soft materials. Mounted without metal parts. Organs (lung, heart, kidneys) are present as outlines to create a shadow on the x-ray image. The natural bones used may have, depending on availability, individual pathological changes, minor structural defects or mounting holes.



Ref.no. 7400

Details:



## X-Ray Phantom Pelvis, flexible

This flexible X-Ray phantom Pelvis contains real human bones and offers the unique opportunity to take real x-ray images. This Phantom consist of a complete pelvis including coccyx, two lumbar vertebrae (L4+L5) and femur stumps. The soft material makes this product ideal for palpation. The natural bone used may have, depending on availability, individual pathological changes, minor structural defects or mounting holes. Delivered with strong transport case.



Ref.no. 7410

Details:



## X-ray phantom head

Human skull, safely embedded in plastic for easy use. The jaws are slightly open to allow dental panoramic images of the teeth. The neck includes some cervical vertebrae depending on the ordered type. An embedded tread allows the use with a tripod. The jaw may have dental gaps, dental repairs, broken teeth, replaced teeth or other individual features. For detailed information about the available phantoms please contact our sales team.



**X-ray phantom head with cervical vertebrae, transparent**

Ref.no. 7300

Details:



**X-ray phantom head with cervical vertebrae, opaque**

Ref.no. 7310

Details:



**X-ray phantom head, transparent**

Ref.no. 7320

Details:



**X-ray phantom head, opaque**

Ref.no. 7330

Details:



## Tripod for X-Ray Phantom head

Very strong tripod for use with the x-ray phantom head. Foldable but stable, holding the head safely in place. With rotatable head for precise positioning of the phantom in the x-ray machine

Ref.no. 7350

Details:



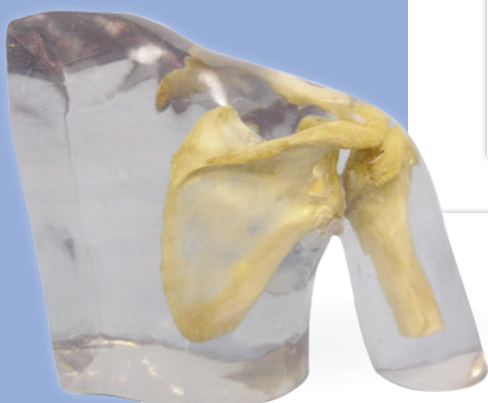
# X-RAY PART PHANTOMS



All Eler-Zimmer phantoms including transport cases

Our X-Ray part phantoms give the unique opportunity to take x-ray images of single body parts again and again. The Phantoms include real human bones and allow to take real x-ray images. The models are perfect for schools and education, but also for medical technicians since the same bones can be x-rayed again and again in different settings without the danger of harming a patient.

The bones are embedded in transparent plastic. If requested the phantoms can be coated with opaque color to hide the inner structures. All phantoms are handmade and unique. They may differ in size and shape. Due to production technology there may be discoloring and cracks inside the phantom. This is related to production and is no lack of quality. These phantoms are only sold against a proof of medical use.



## X-ray Phantom hand

Hand with wrist.

**Transparent**  
Ref.no. 7210



**Opaque**  
Ref.no. 7215



## X-ray Phantom foot

Foot Skeleton with start of lower leg.

**Transparent**  
Ref.no. 7230



**Opaque**  
Ref.no. 7235



## X-ray Phantom knee

Part of upper- and lower leg and patella.

**Transparent**  
Ref.no. 7250



**Opaque**  
Ref.no. 7255



## X-ray Phantom lower arm

Hand with forearm and elbow.

**Transparent**  
Ref.no. 7220



**Opaque**  
Ref.no. 7225



## X-ray Phantom elbow

Part of upper and lower arm.

**Transparent**  
Ref.no. 7260



**Opaque**  
Ref.no. 7265



**Transparent**  
Ref.no. 7340



**Opaque**  
Ref.no. 7345



## X-ray Phantom shoulder

Humerus with shoulder girdle.