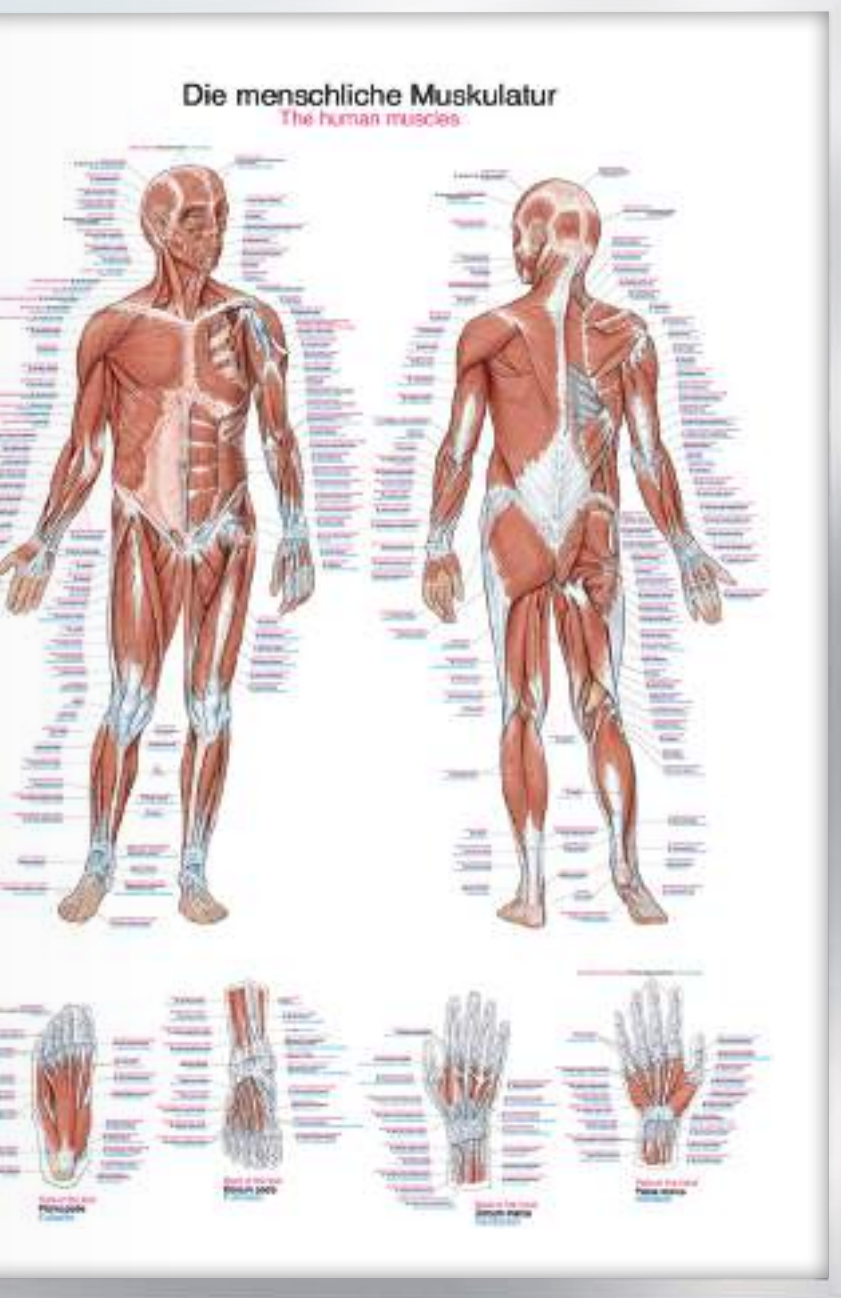


Anatomical Charts



ANATOMICAL CHARTS

The Erler-Zimmer charts make anatomy clear and understandable for everyone. The graphics have the medical and graphic level of an anatomy atlas and also offer the opportunity to learn the medical terms in German, Latin and English.

But the medical charts are not only a first class learning aid, as a decorative object they also visually enhance any practice, clinic or doctor's room. Whether as inexpensive paper charts in 50x70cm or as a high-quality plastic version with fixed metal edging and in the premium format 70x100cm, Erler-Zimmer Charts are always the best choice.

EXCLUSIVELY
at Erler-Zimmer 



50 x 70 cm

Material:
Art paper, with
rods and
hanger.



70 x 100 cm

Material:
Plastic, with
metal edging
and hanger.



The canine skeleton

Anatomical chart in German, Latin, English.

70x100 cm
Ref.no. VL100

Details:



50x70 cm
Ref.no. VL600

Details:



The canine musculature

Anatomical chart in German, Latin, English.

70x100 cm
Ref.no. VL110

Details:



50x70 cm
Ref.no. VL610

Details:



The equine skeleton

Anatomical chart in German, Latin, English.

70x100 cm
Ref.no. VL200

Details:



50x70 cm
Ref.no. VL700

Details:



The equine musculature

Anatomical chart in German, Latin, English.

70x100 cm
Ref.no. VL210

Details:



50x70 cm
Ref.no. VL710

Details:





The human skeleton

Anatomical chart in German, Latin, English.

70x100 cm

Ref.no. AL100

Details:



50x70 cm

Ref.no. AL500

Details:



Anatomical chart in English, Latin.

50x70 cm. Ref.no. AL600

Anatomical chart in French, Latin.

50x70 cm. Ref.no. AL700

Anatomical chart in Spanish, Latin.

50x70 cm. Ref.no. AL800

The human muscles

Anatomical chart in German, Latin, English.

70x100 cm

Ref.no. AL102

Details:



50x70 cm

Ref.no. AL502

Details:



Anatomical chart in English, Latin.

50x70 cm. Ref.no. AL602

Anatomical chart in French, Latin.

50x70 cm. Ref.no. AL702

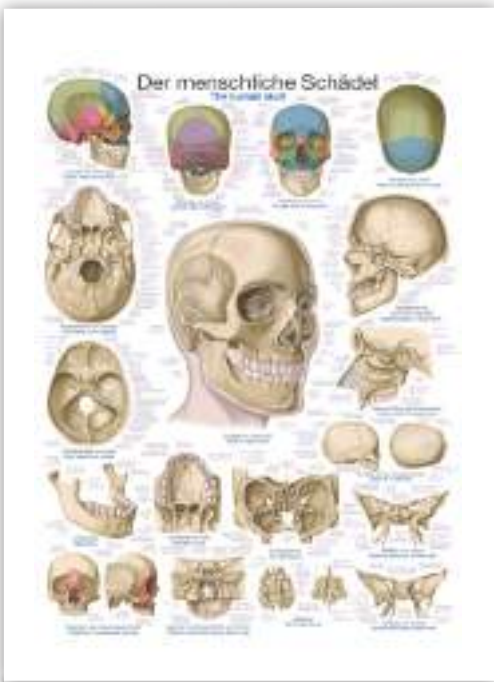
Anatomical chart in Spanish, Latin.

50x70 cm. Ref.no. AL802



▼ Delivery without frame!
 50x70 = Art paper, with rods and hanger.
 70x100 = Plastic, with metal edging and hanger.





The human skull

Anatomical chart in German, Latin, English.
70x100 cm

Ref.no. AL103

Details:



50x70 cm

Ref.no. AL503

Details:



Osteoporosis

Anatomical chart in German, English.
70x100 cm

Ref.no. AL104

Details:



50x70 cm

Ref.no. AL504

Details:



The nervous system

Anatomical chart in German, Latin, English.
70x100 cm

Ref.no. AL105

Details:



50x70 cm

Ref.no. AL505

Details:



The vascular system

Anatomical chart in German, Latin, English.
70x100 cm

Ref.no. AL106

Details:



50x70 cm

Ref.no. AL506

Details:





The vertebral column

Anatomical chart in German, English.

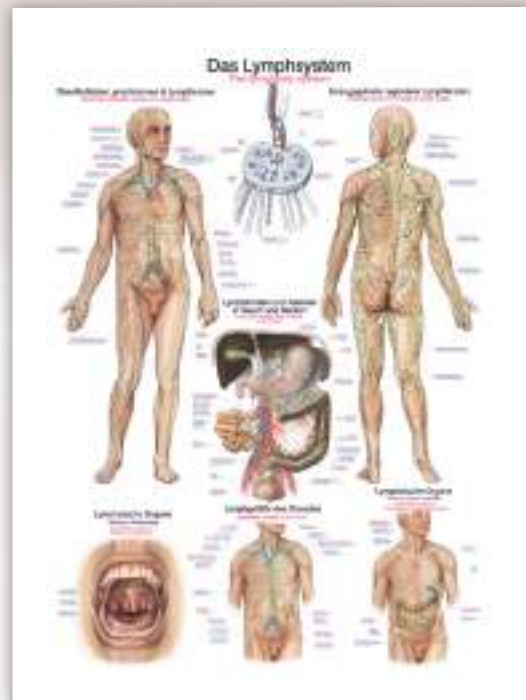
70x100 cm

50x70 cm

Ref.no. AL107

Ref.no. AL507

Details:



The lymphatic system

Anatomical chart in German, Latin, English.

70x100 cm

50x70 cm

Ref.no. AL109

Ref.no. AL509

Details:



Lower Limb

Anatomical chart in German, Latin, English.

70x100 cm

50x70 cm

Ref.no. AL108

Ref.no. AL508

Details:



Upper Limb

Anatomical chart in German, Latin, English.

70x100 cm

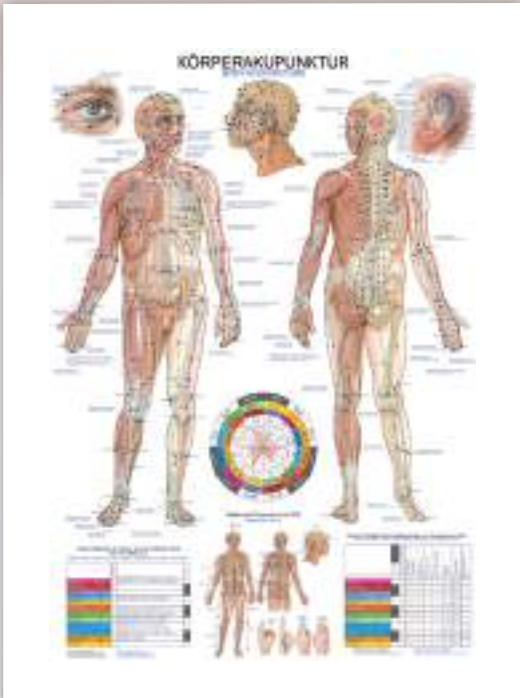
50x70 cm

Ref.no. AL113

Ref.no. AL513

Details:





Body acupuncture

Anatomical chart in German, English.

70x100 cm

Ref.no. AL110

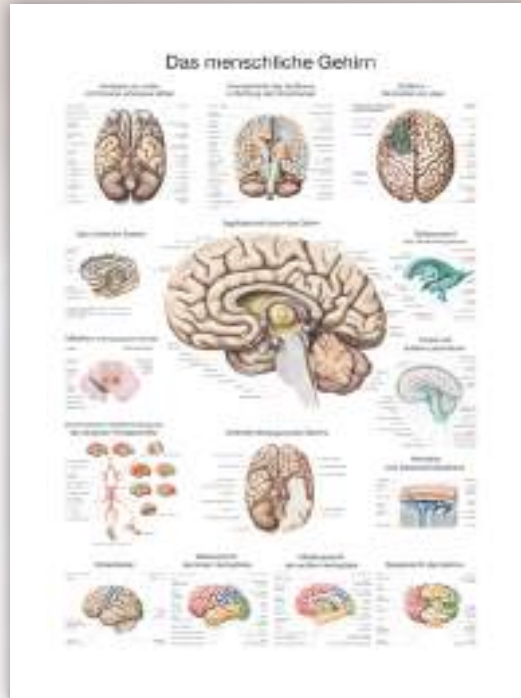
Details:



50x70 cm

Ref.no. AL510

Details:



The human brain

Anatomical chart in English.

70x100 cm

Ref.no. AL114E

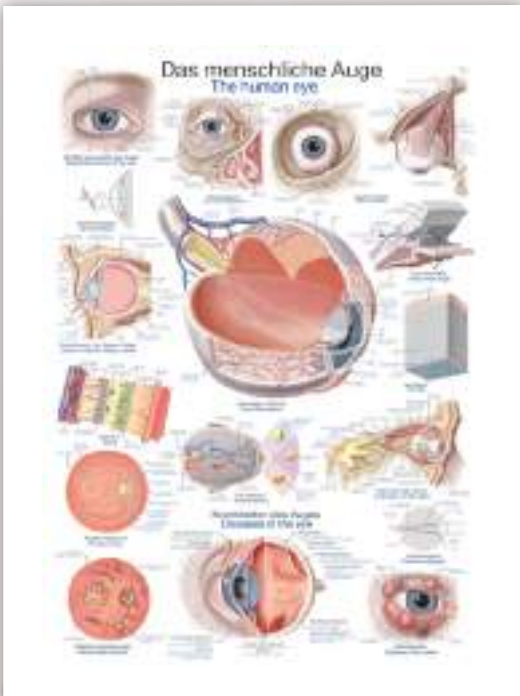
Details:



50x70 cm

Ref.no. AL514E

Details:



The human eye

Anatomical chart in German, English.

70x100 cm

Ref.no. AL111

Details:



50x70 cm

Ref.no. AL511

Details:



The human heart

Anatomical chart in German, English.

70x100 cm

Ref.no. AL112

Details:

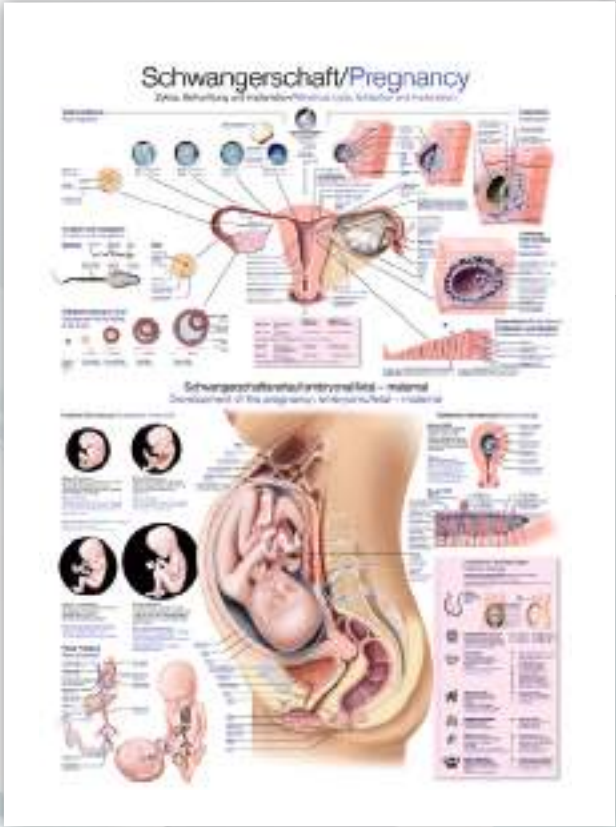


50x70 cm

Ref.no. AL512

Details:





Pregnancy

Anatomical chart in German, Latin, English.
70x100 cm

Ref.no. AL118

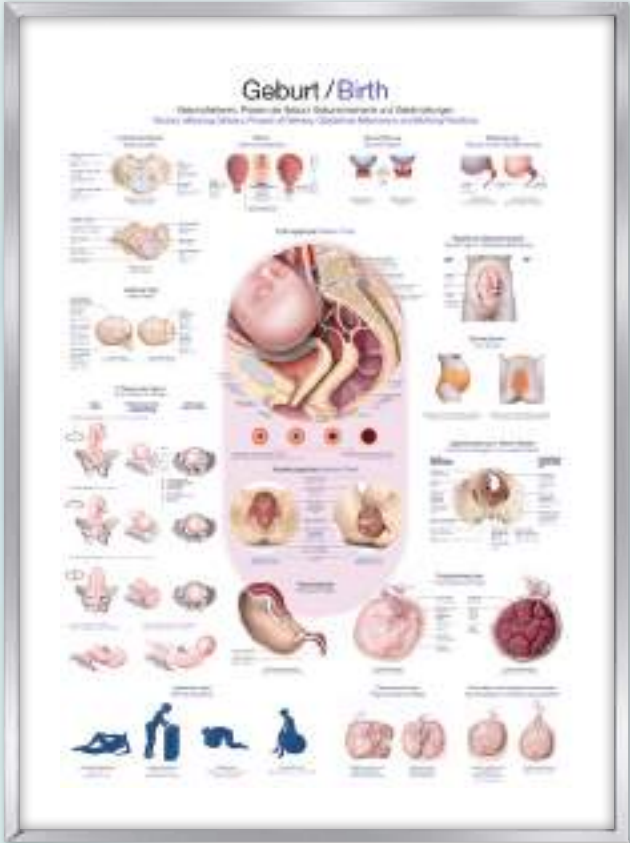
Details:



50x70 cm

Ref.no. AL518

Details:



Birth

Anatomical chart in German, English.
70x100 cm

Ref.no. AL119

Details:



50x70 cm

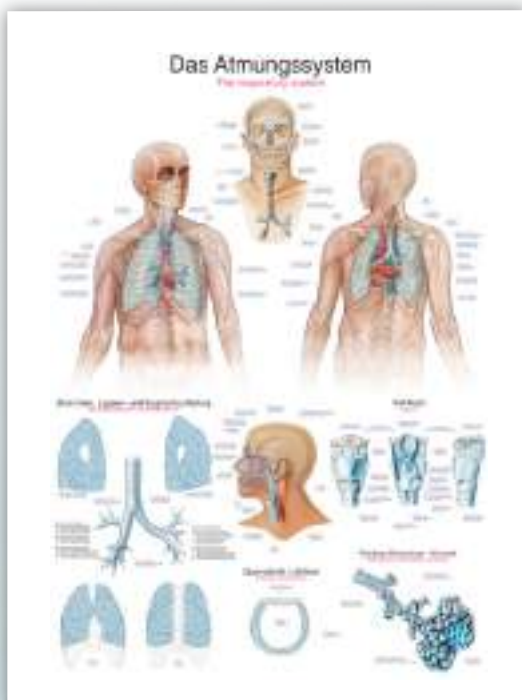
Ref.no. AL519

Details:



▼ Delivery without frame!
50x70 = Art paper, with rods and hanger.
70x100 = Plastic, with metal edging and hanger.





The respiratory system

Anatomical chart in German, Latin, English.

70x100 cm

50x70 cm

Ref.no. AL116

Ref.no. AL516

Details:



Details:



The digestive system

Anatomical chart in German, Latin, English.

70x100 cm

50x70 cm

Ref.no. AL117

Ref.no. AL517

Details:



Details:



Female genital organs

Anatomical chart in German, English.

70x100 cm

50x70 cm

Ref.no. AL124

Ref.no. AL524

Details:



Details:



Male genital organs

Anatomical chart in German, English.

70x100 cm

50x70 cm

Ref.no. AL123

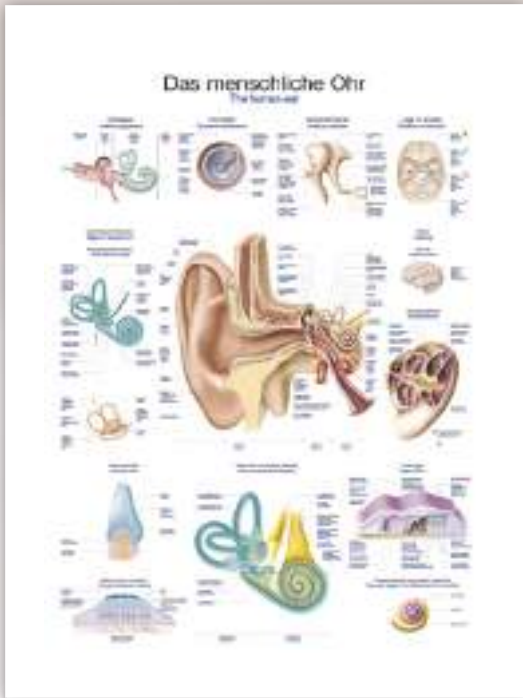
Ref.no. AL523

Details:



Details:





The human ear

Anatomical chart in German, English.

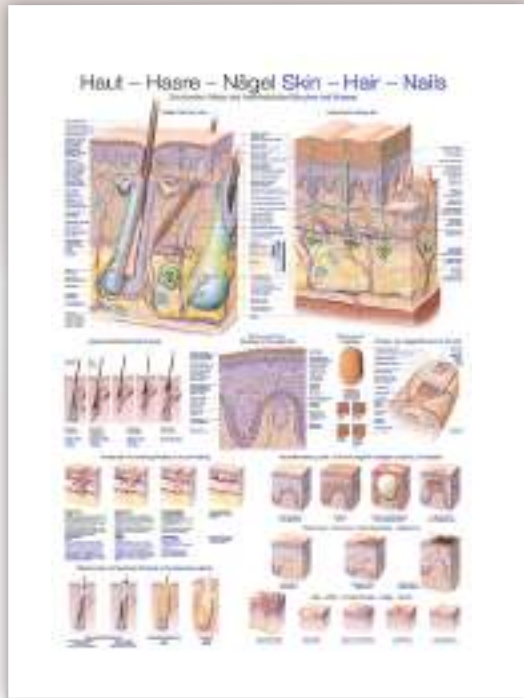
70x100 cm

50x70 cm

Ref.no. AL120

Ref.no. AL520

Details:



Skin-Hair-Nails

Anatomical chart in German, English.

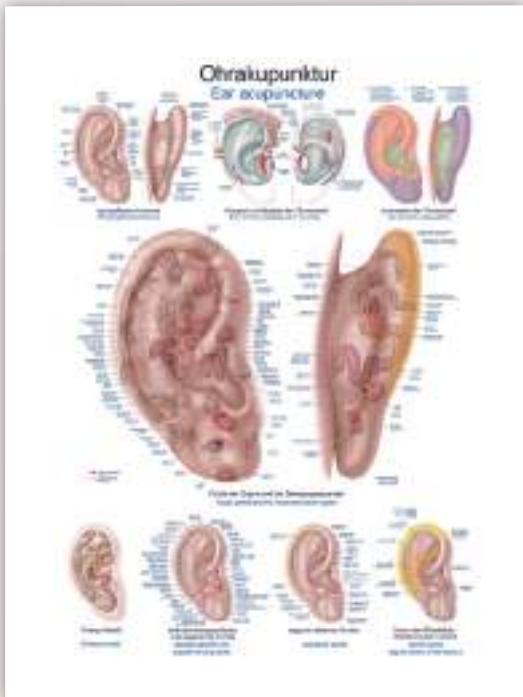
70x100 cm

50x70 cm

Ref.no. AL121

Ref.no. AL521

Details:



Ear acupuncture

Anatomical chart in German, English.

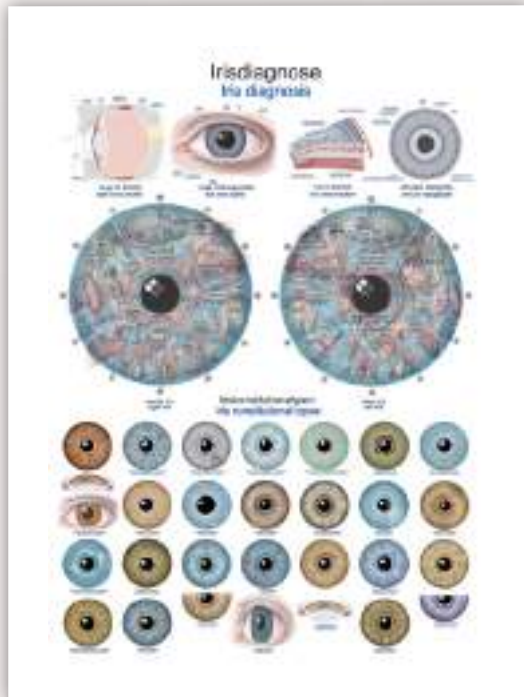
70x100 cm

50x70 cm

Ref.no. AL125

Ref.no. AL525

Details:



Iris diagnosis

Anatomical chart in German, English.

70x100 cm

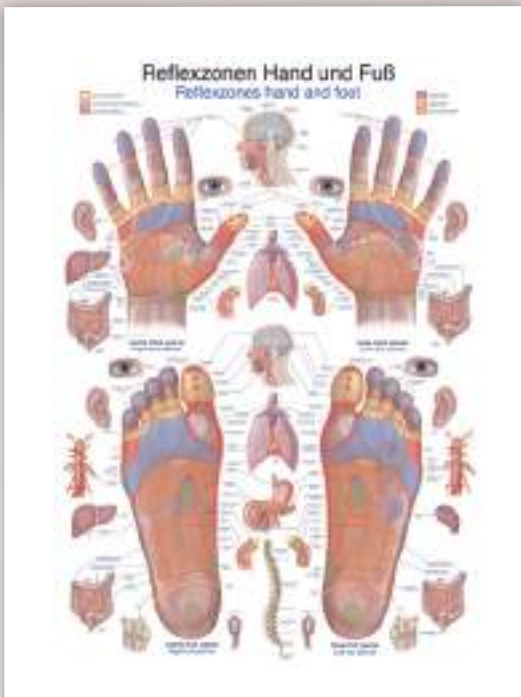
50x70 cm

Ref.no. AL126

Ref.no. AL526

Details:





Reflexzones hand and foot

Anatomical chart in German, English.

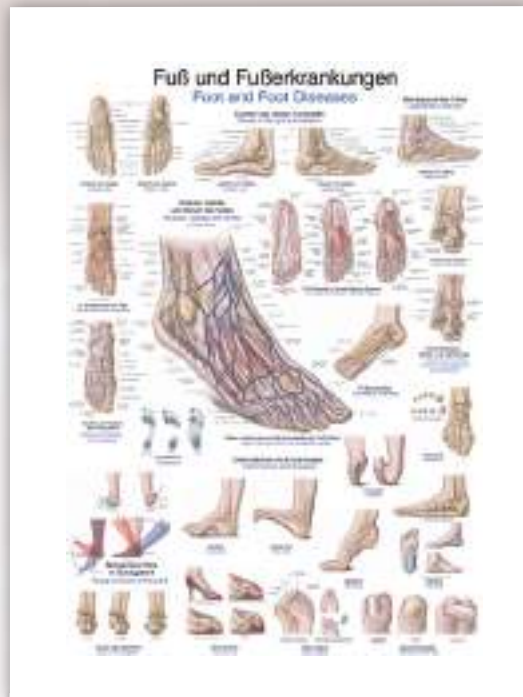
70x100 cm

50x70 cm

Ref.no. AL127

Ref.no. AL527

Details:



Foot and foot diseases

Anatomical chart in German, English.

70x100 cm

50x70 cm

Ref.no. AL128

Ref.no. AL528

Details:



The hand

Anatomical chart in German, English.

70x100 cm

50x70 cm

Ref.no. AL129

Ref.no. AL529

Details:



Pelvic floor

Anatomical chart in German, English.

70x100 cm

50x70 cm

Ref.no. AL138

Ref.no. AL538

Details:





Foot and its Joints

Anatomical chart in German, English.

70 x 100 cm

50 x 70 cm

Ref.no. AL155

Ref.no. AL555

Details:

Details:



The Knee Joint

Anatomical chart in German, English.

70 x 100 cm

50 x 70 cm

Ref.no. AL147

Ref.no. AL547

Details:

Details:



Das Knie - Die Hüfte

Anatomical chart in German.

70 x 100 cm

50 x 70 cm

Ref.no. AL151

Ref.no. AL551

Details:

Details:





Shoulder and Elbow

Anatomical chart in German, English.
 70x100 cm 50x70 cm
 Ref.no. AL139 Ref.no. AL539
 Details:



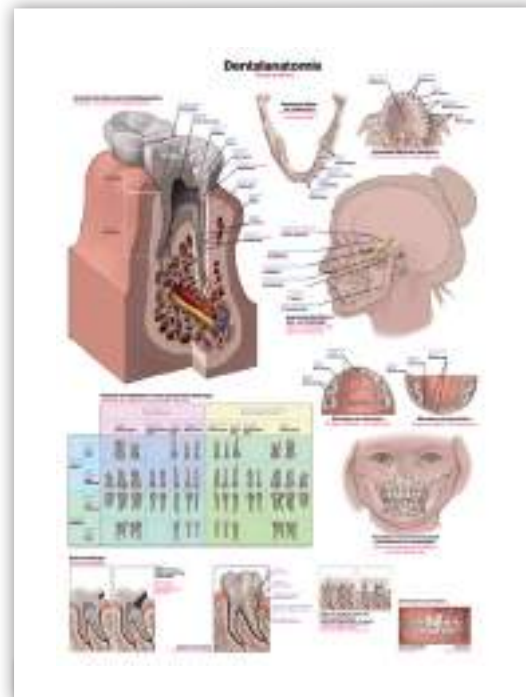
The female breast

Anatomical chart in German, English.
 70x100 cm 50x70 cm
 Ref.no. AL134 Ref.no. AL534
 Details:



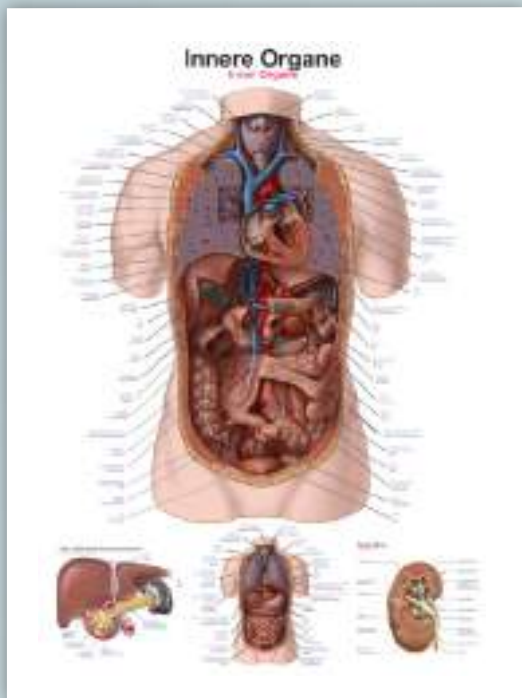
Dermatomes

Anatomical chart in German, Latin, English.
 70x100 cm 50x70 cm
 Ref.no. AL161 Ref.no. AL561
 Details:



Dental anatomy

Anatomical chart in German, Latin, English.
 70x100 cm 50x70 cm
 Ref.no. AL162 Ref.no. AL562
 Details:



Internal organs

Anatomical chart in German, Latin, English.

70x100 cm

50x70 cm

Ref.no. AL163

Ref.no. AL563

Details:



Details:



The Blood

Anatomical chart in German, English.

70x100 cm

50x70 cm

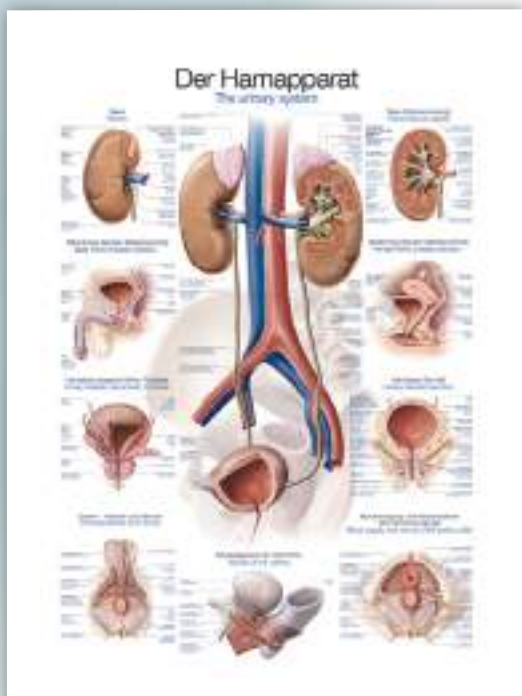
Ref.no. AL165

Ref.no. AL565

Details:



Details:



Urinary System

Anatomical chart in German, English.

70x100 cm

50x70 cm

Ref.no. AL164

Ref.no. AL564

Details:



Details:



Trigger points

Anatomical chart in German, Latin, English.

70x100 cm

50x70 cm

Ref.no. AL160

Ref.no. AL560

Details:



Details:

